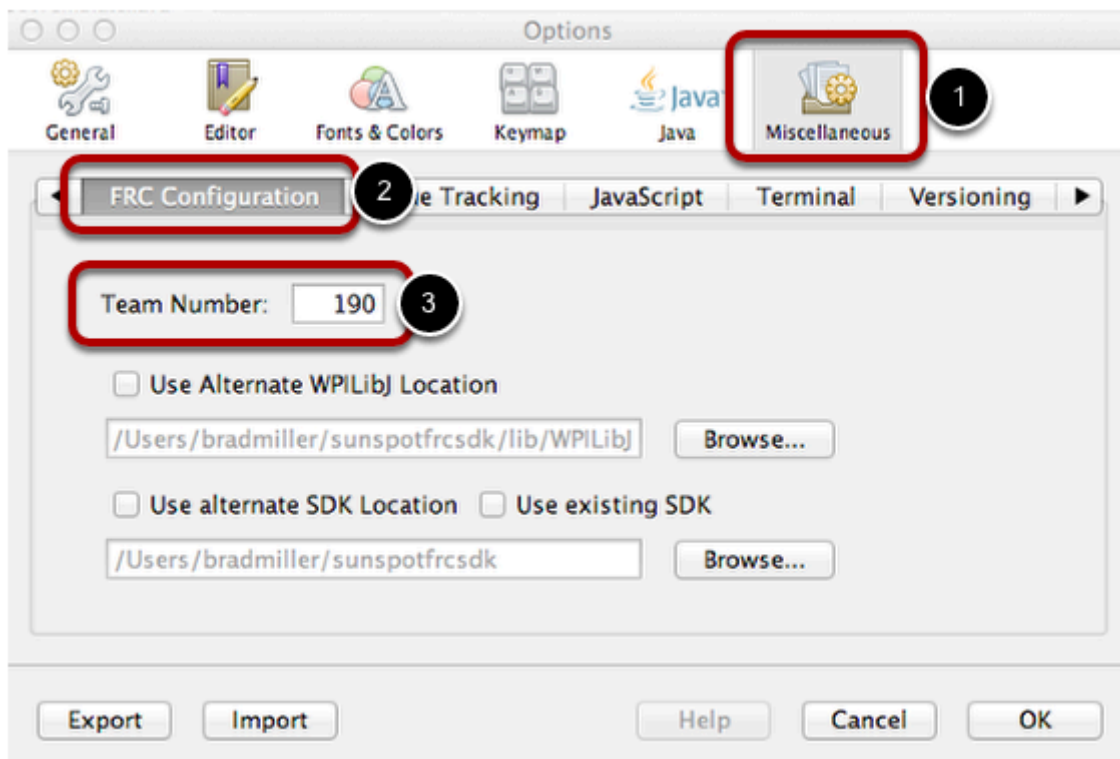


## Configuring the NetBeans installation

# Configuring the NetBeans installation

Netbeans needs to be configured to be able to download and run programs on your robot. Once configured, it can be used to run any program with the same team number.

## Setting the team number



Select the preferences (or options) panel from the NetBeans menu. The method of selecting the preferences depends on the platform. Select the Miscellaneous tab, then the FRC Configuration panel, then fill in the team number. This will configure NetBeans so that it can download code to your robot. The team number is used to determine the robot IP address. Click "OK" when finished to save the changes.